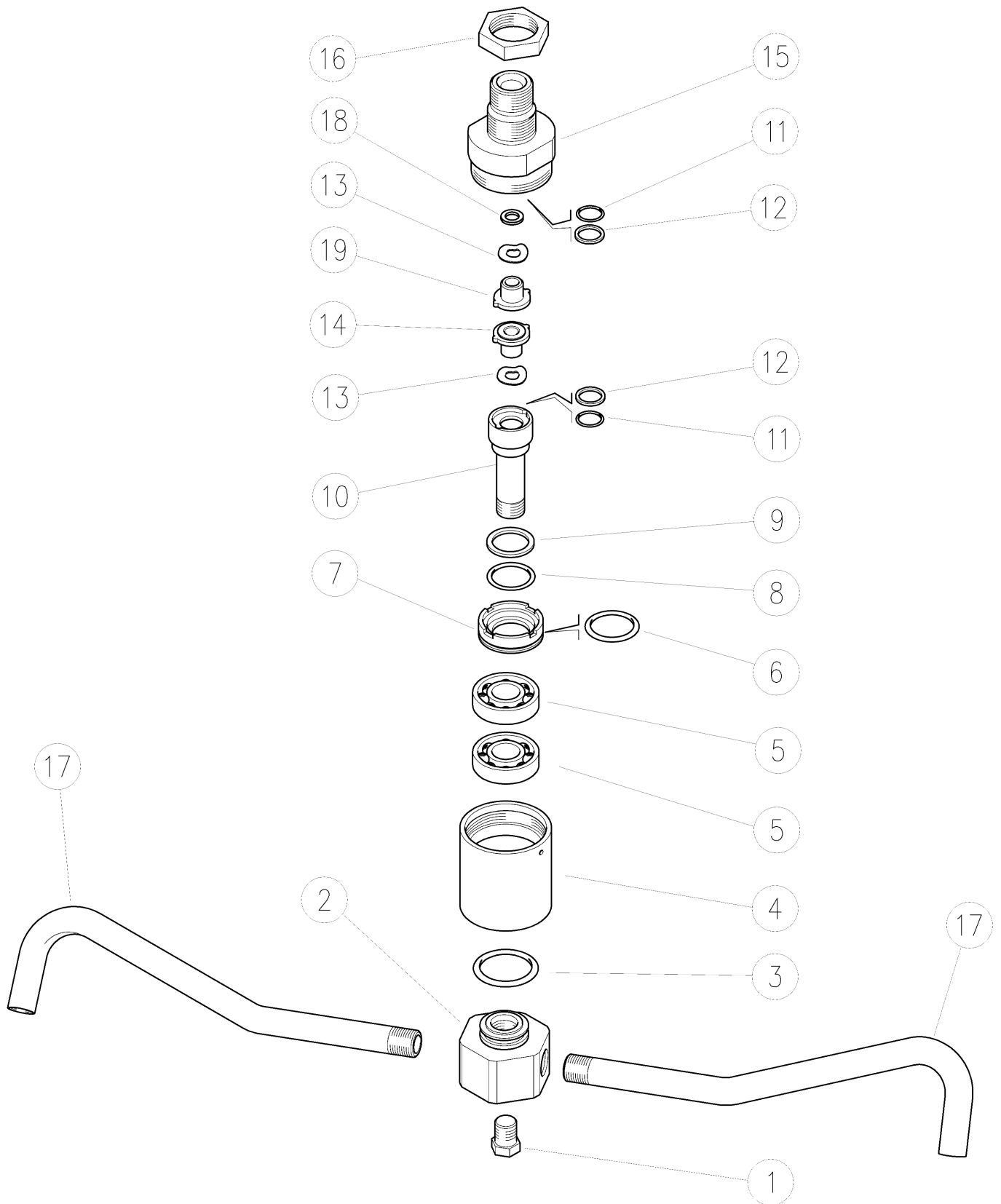


26.1420.00 GR38/200 - Rotating Head, 3/8M - 2x1/8FBsp
26.1440.00 GR38/400 - Rotating Head, 2x1/8FNpt -400m

26.1440.08 GR38/400/8° - Rotating Head, 2x1/8FNpt



K1K2K3K4

	K1	K2	K3	K4	
1 15.3711.18RGrub screw, 303 Sst. 1/8M Npt	1				4
2 26.1405.31RFitting, M12 x 1" F nickel-plated brass	1				5
3 10.3180.10RO-ring, 2,62x15,08 mm vi.	1				10
4 26.1404.31RBody, M30 x 1" F nickel-plated brass	1				5
5 11.4410.32RSst.ball-bearing, 12x32x10 mm	2				3
6 10.3077.10RO-ring, 1,78x28,3 mm Vi 70	1				10
7 26.1403.31RSpacer ring, brass	1				5
8 10.3068.25RO-Ring, 1,78x17,17 mm s.	1				10
9 10.4012.60RSeal Ring 16,2x20,5x1,5 PTFE	1				10
10 26.1402.51RRotating pin, M12, stainless steel	1				5

(1) 26.1440.00 (2) 26.1420.00

K1K2K3K4

	K1	K2	K3	K4	
11 10.3057.10RO-Ring 1,78 x 9,25 mm Viton	2				10
12 10.4010.60RBack-up ring, opn. 10x12,6x1,2 mm	2				10
13 10.1110.51RSst ring	2				5
14 26.1413.83RSeat	1				3
15 26.1401.31RCoupling, 3/8-1/2 Bsp- brass	1				5
16 29.0175.31RNut, 1/2F Bsp brass	1				10
17 26.1441.56RSst.tube 234mm bent 1/8Npt F - M12 (1)	2				5
17 26.1421.56RSst.tube 134mm bent 1/8Npt F - M12 (2)	2				5
18 14.3564.00RWasher, 5,3x9,5x1 mm brass	1				10
19 26.1406.83RSeat	1				3