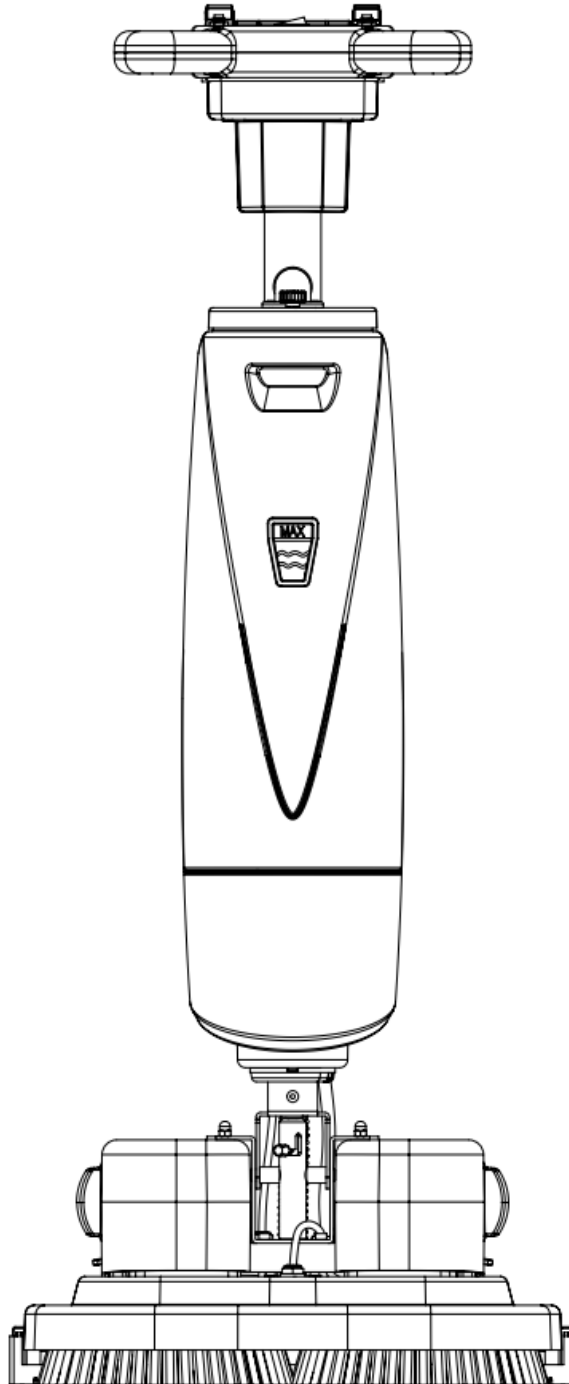


BLANCUS 45 Manual Use



Please read this manual carefully before using the product .

1.0 OVERVIEW



ATTENTION: Please read this manual carefully before using BLANCUS 45.

INTRODUCTION

BLANCUS 45 Micro Automatic Floor Scrubber is a machine which uses the mechanical movement of the disc brush and the chemical action of water and detergent solution to clean the hard floor with various stains and at the same time it can collect both the removed stains and the detergent solution not absorbed by the floor

RANGE OF APPLICATION

This machine is suitable for quick mechanized floor cleaning of small office buildings, hotels, restaurants and workshops, which makes cleaning operations more efficient and faster.

This device is not suitable for using in the rain or under a water gun. It is strictly forbidden to use this equipment to collect dangerous dust or flammable liquid in a flammable and explosive environment. In addition, the device is not suitable for using as a transport vehicle.

2.0 SUMMARY OF SAFETY MATTERS



ATTENTION: The operator should read this manual carefully.

- Be familiar with all the design, control methods, and functions of the scrubber before starting any work.
- When using the scrubber for the first time, the operator should place it in an open area to understand its various functions.
- Before starting any operation, check the status of the scrubber and its components under normal conditions and during operation.
- If the scrubber is not working properly, the device cannot be used.

- The operator must use it in the appropriate application area (cleaning the hard floor) when operating the scrubber.
- Pay attention to obstacles in the workplace, such as stairs, shelves, etc., and pay attention to the surrounding people, especially children.
- Use a suitable cleaning agent (When cleaning the scrubber, use the cleaning agent only in accordance with the manufacturer's instructions for use, and use the cleaning agent at the appropriate dosage and limit.
- This scrubber should only be maintained and serviced by suitably trained personnel using appropriate tools.
- Turn off the power or remove the battery when cleaning or maintaining the scrubber.
- Do not use high pressure water or steam equipment to clean the scrubber.
- Prevent electrical components from entering the water.



ATTENTION: ▲ Do not use this scrubber to clean flammable liquids, solvents, fuel oil, reactive metal water vapor or flammable dust.

▲ Risk of electric shock. Do not use damaged wires. Unplug the cord before servicing.

▲ For safety reasons: Using an incompatible battery charger may result in battery damage or fire.

3.0 TECHNICAL PARAMETERS FOR THE PRODUCT

Item	Parameters
Rated voltage	DC24V
Working width	45.5cm
Water absorption width	50cm
Work efficiency	600m ² /h

Disc brush diameter	22.8cm
Disc brush rotation rate	200rpm
Disc brush motor	2*200W
Disc brush pressure	20kg
Water absorption motor	200W
Vacuum degree	120mbar
Turning radius	30cm
Clean water tank capacity	3.5L
Sewage tank capacity	4L
Noise level	75dB
Battery pack	2*8.8Ah-24V (Lithium battery)
Battery weight	1.9*2kg
Total weight of the machine	22kg
Gross weight	34kg
Package dimensions	127.5*60*45 (CM)

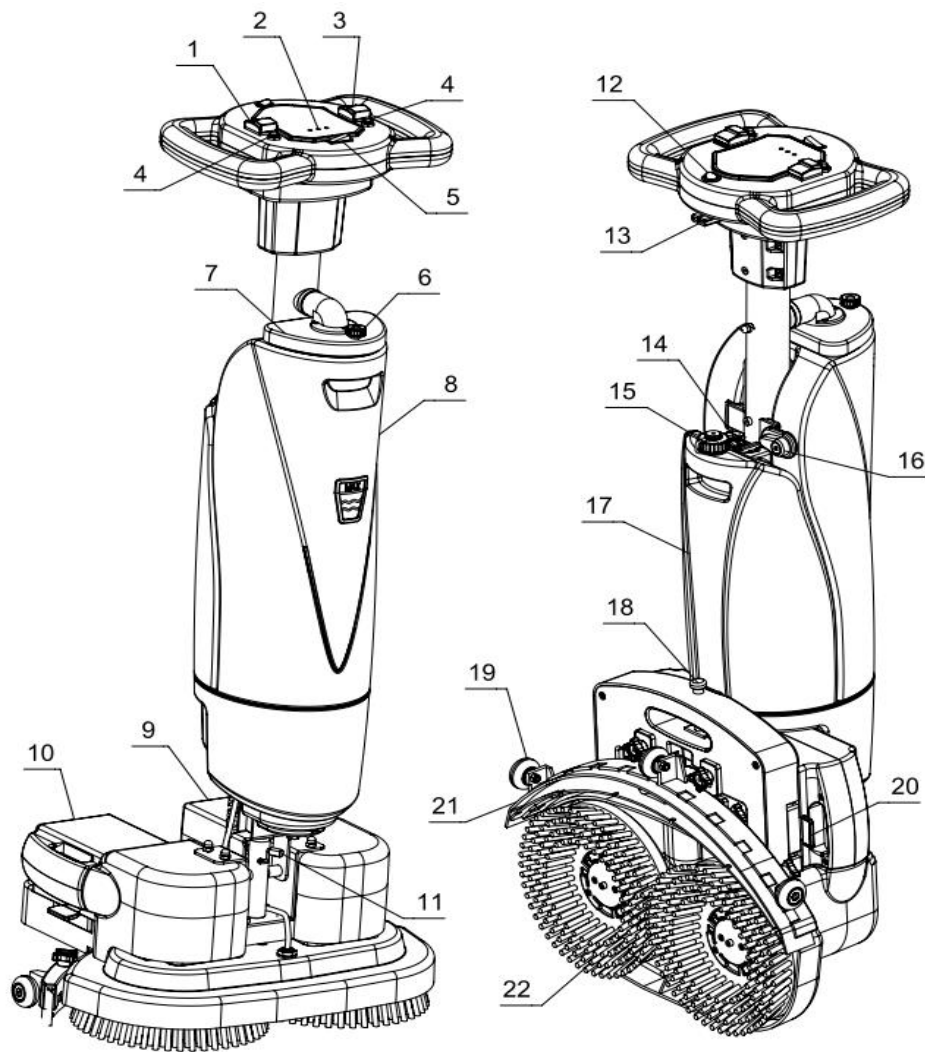
4.0 THE PACKAGE OF THE MACHINE

Packing size is as follows:

length: 1275mm

width: 600mm

height: 450mm



5.0 STRUCTURE

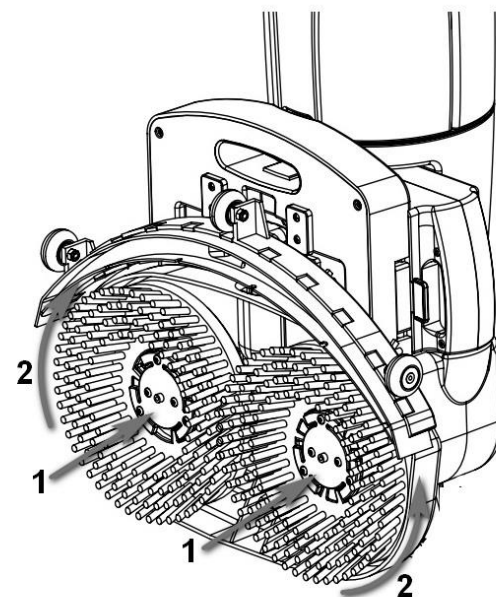
- | | | |
|-------------------------------|---------------------------|-------------------------|
| 1. Water suction switch | 2. battery indicator | 3. Disc brush switch |
| 4. Overload reset button | 5. Power switch | 6. Screw |
| 7. Sewage tank cover | 8. Sewage tank | 9. Right battery |
| 10. Right battery | 11. Upright trigger lock | 12. Water valve switch |
| 13. Charging socket | 14. Clean water tank lock | 15. Threaded tank cover |
| 16. Sewage tank swing buckle | 17. Clean water tank | 18. Machine lock button |
| 19. Parabolic squeegee wheels | 20. Battery pull buckle | 21. Rubber strip |
| 22. Disc brush | | |

6.0 INSTRUCTIONS FOR USE

6-1

6-1 The description picture of disc brush installation: picture 6-1

1. According to step 1 in the picture, press the disc brush to the positive drive buckle to the end.
2. Rotate the two disc brushes in the direction of step 2 in the picture to fasten the disc brush .

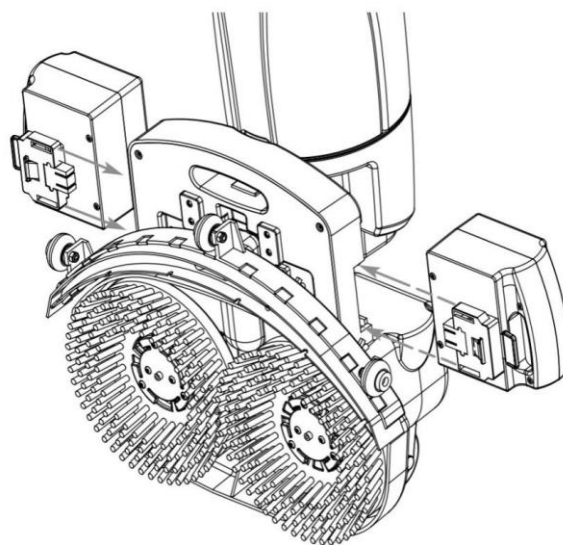


6-2

6-2. battery installation instructions:

See picture 6-2.

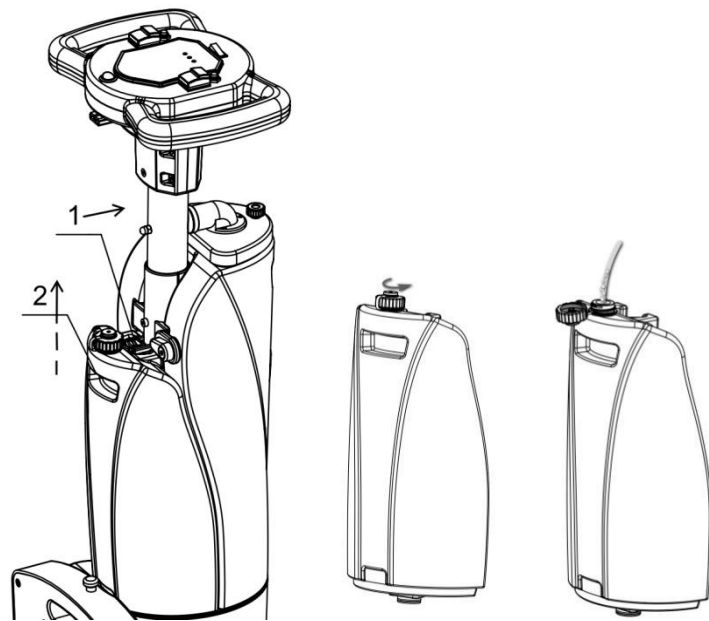
1. Distinguish the left and right direction of the battery.
2. As shown in the arrow, align the mounting slots of the battery.
3. Push the battery to the end along the slot and tighten the battery.



6-3 The description picture of filling the water :

Picture 6-3- (1) ~ (3)

1. As shown in step 1 of Figure 6-3-(1), push the lock of the clean water tank to the inside.



6-3- (1)

6-3- (2)

6-3- (3)

2. Lift the clean water tank up as shown in step 2 of Figure 6-3-(1).

3. Twist the water tank cover as shown in Figure 6-3-(2).

4. Inject water into the water tank as shown in Figure 6-3-(3).

ATTENTION: When refilling the clean water tank, it is necessary to empty the sewage tank.

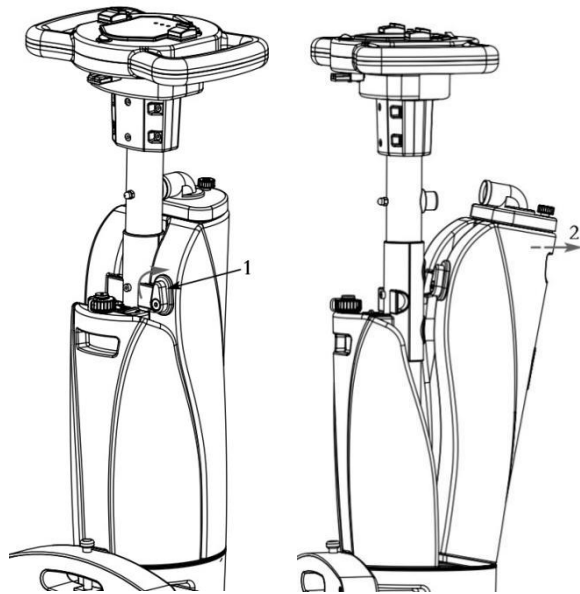
ATTENTION: Do not fill the water in the sewage tank or dirty water into the clean water tank, which will result in blockage of the pipeline

6-4 The description picture of disassembling sewage tank :

Picture 6-4- (1) - (2)

1. Move the sewage tank swing buckle up as shown in Figure 6-4-(1).

2. As shown in Figure 6-4-(2), the upper end of the sewage tank is opened outwards, and then remove the tank from the joint.



6-4- (1)

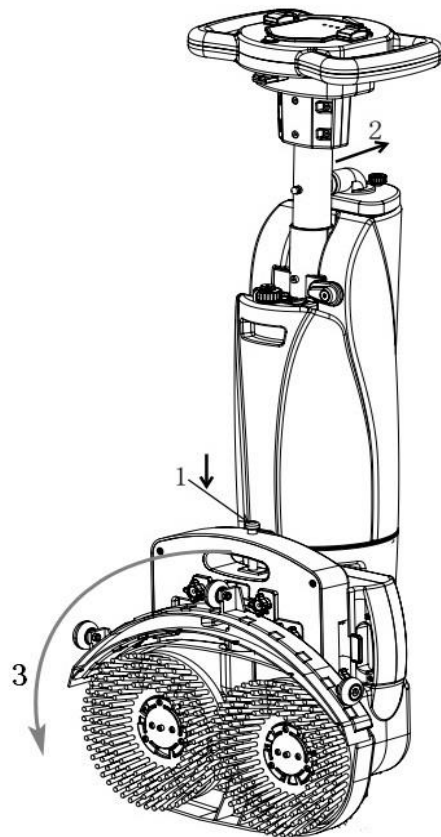
6-4- (2)

6-5 The description of disassembling the brush part of the

1. Press the

2. Move the lock.

3. Turn the h



6-6 The description picture of control panel: picture 6-6

1. Disc brush motor overload protection button

2. Power switch

3. Water suction motor overload protection button

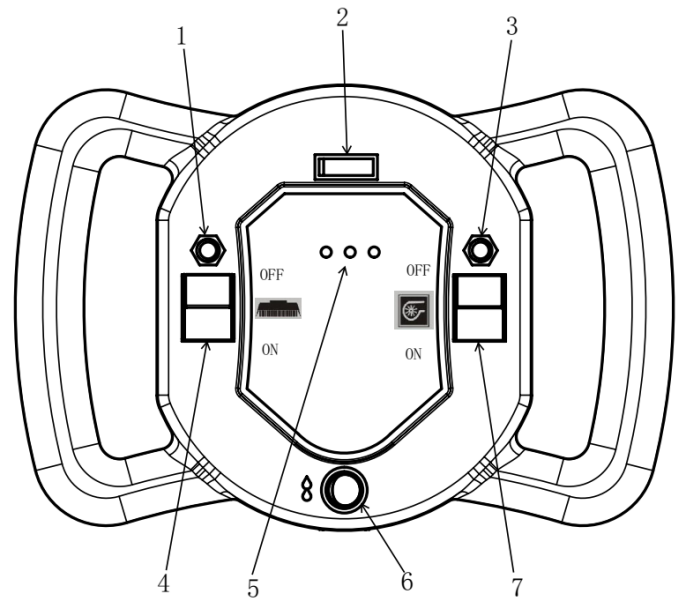
4. Disc brush switch

5. Battery indicator (red, yellow, green)

Description: When the red, yellow, and green indicators are on, it indicates that the battery is fully charged. When the green indicator is off, the red and yellow indicators are on, it indicates that the power consumption has exceeded half. When only the red indicator is on and flashing, it indicates that the battery is low, and should be charged in time.

6. Clean water switch

7. Water suction switch

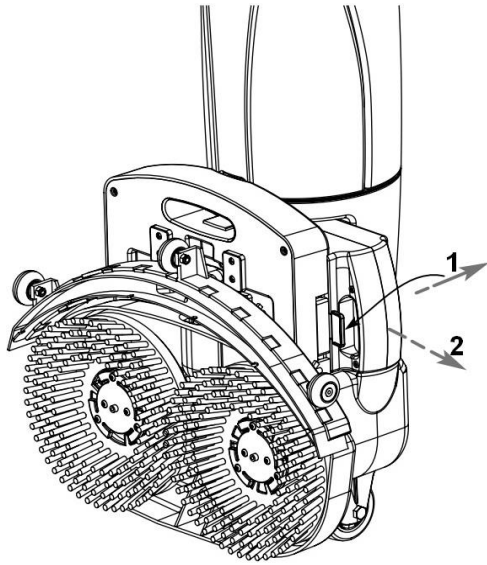


6-6

6-7 Battery disassembly: picture 6-7

1. Pull the battery puller in the 1 direction to the end as shown in Figure 6-7.


2. Pull the battery in the direction of 2 as shown in Figure 6-7.。



6-7

图 6-6

6-8 Battery charging:

 **ATTENTION: A battery charger approved and supplied by the company must be used (picture 6-8). Using an incompatible charger may result in damage to the battery and may result in fire. Two batteries must be charged together during charging.**

Correct charging step:

1. Transport the machine to a well ventilated area.
2. Park the machine at a dry and level place and turn off the main power.
3. Plug the charger DC cable plug into the charging socket of the machine.
4. Connect AC power cord of the charger to a properly grounded outlet.

5.The charger will automatically start charging, charging time is about 1 hour and 40 minutes.

6.After the end of the charging cycle, unplug the AC power cord from the outlet first and then unplug the DC charging plug from the machine.



6-8

7.0 MAINTENANCE

1、 Daily maintenance

- (1) Remove the needle holder/Disc brush and wipe clean with a specific detergent.
- (2) Drain the water from the sewage tank and the clean water tank and rinse them with clean water. Check for any debris in the recovery tank. If it is, please remove it immediately.
- (3) Lift the water scraper component off the floor and wipe the scraper with a wet towel.
- (4) Wipe the machine clean with a specific detergent.
- (5) Charge the battery.
- (6) Check if the edge of the scraper is sharp. If it is damaged, please switch to the other side or replace it.

2、 Monthly maintenance

- (1) Check for loose or corroded battery connections.
- (2) Use a specific lubricant to lubricate all lubrication points and shafts.
- (3) Check if the machine fasteners are loose.
- (4) Check the water tank for leaks. Check the seal of the sewage tank cover. If it is damaged, please replace it.

3、 How to store the machine

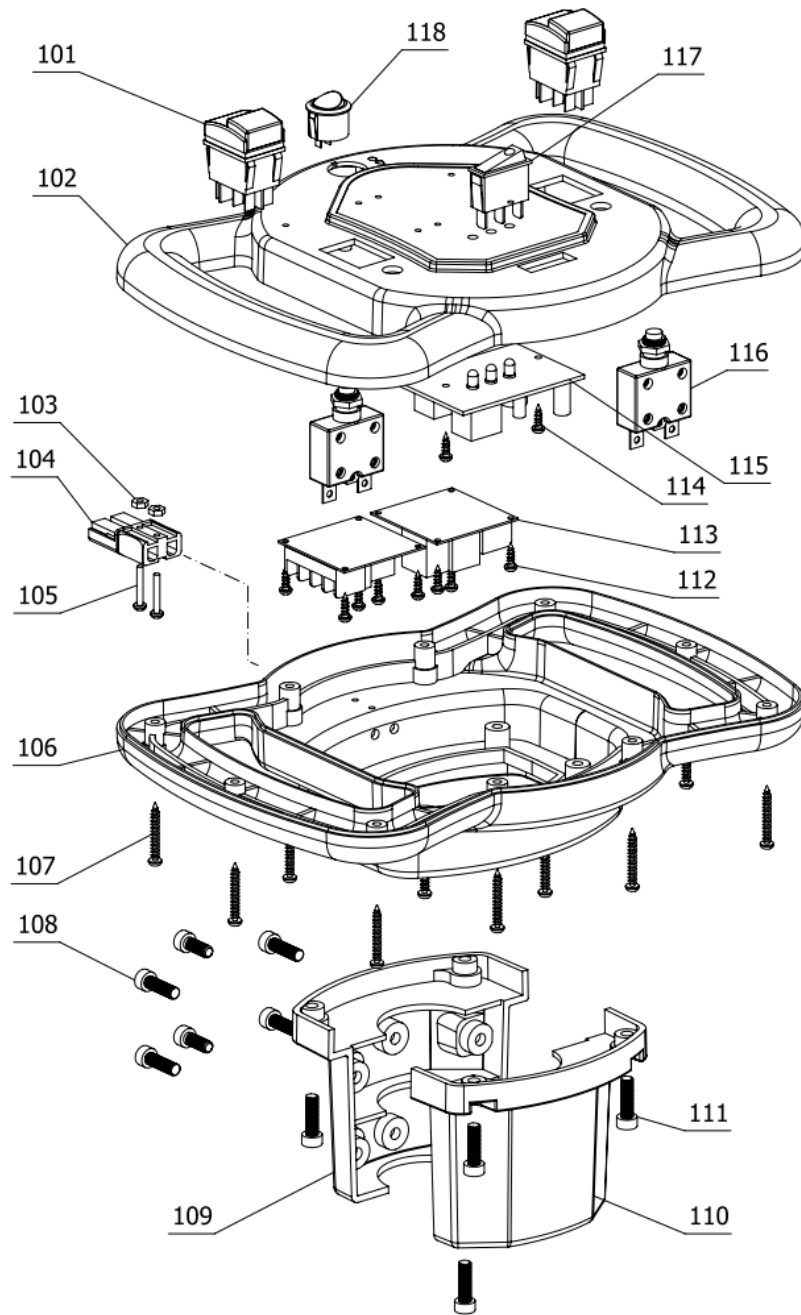
- (1) Store the machine in a dry place indoors.
- (2) Store the machine upright.
- (3) If the storage location is extremely cold, it is necessary to keep the machine completely dry before storing the machine to avoid damage caused by low temperature.

(4) Please drain the sewage tank and the clean water tank before storing the machine.

8.0 Common faults and solutions

Faults	Cause Analysis	Solutions
The machine can't run	Did not turn on the power switch	Please turn on the power switch
	The battery is low and needs to be charged	Please charge the battery
	Battery damage	Replace the battery
	The power switch is damaged	Contact the manufacturer
Disc brush motor cannot run	The battery is low and needs to be charged	Please charge the battery
	Damage to the disc brush motor or damage to its circuit	Contact the manufacturer
	Electromagnetic switch damage	Contact the manufacturer
	Controller damage	Contact the manufacturer
	Drive motor or its circuit is damaged	Contact the manufacturer
	Disc brush motor overload protection	Manual reset after waiting for cooling
Water suction motor can not run	Water suction motor or its circuit is damaged	Contact the manufacturer
	Water suction motor overload protection	Manual reset after waiting for cooling
Poor water suction performance	The drain pipe plug is loose	Tighten the drain plug
	Water scraper component blocked	Clean the Water scraper component
	Water scraper abrasion	Switch to the other side or replace it. .

Poor water suction performance	The suction pipe is not reliably connected to the water scraper component	Reliably connect the suction pipe
	Water suction pipe blocked	Clear the blockage
	Suction pipe damage	Replace the suction pipe
	The sewage tank cover is not covered	Cover the sewage tank cover
	Sewage tank cover seal is damaged	Replace the seal
	Water suction motor damage	Contact the manufacturer
	The battery is low and needs to be charged	Please charge the battery
Short running time	Battery damage	Replace the battery
	Battery charger is damaged	Repair or replace the charger

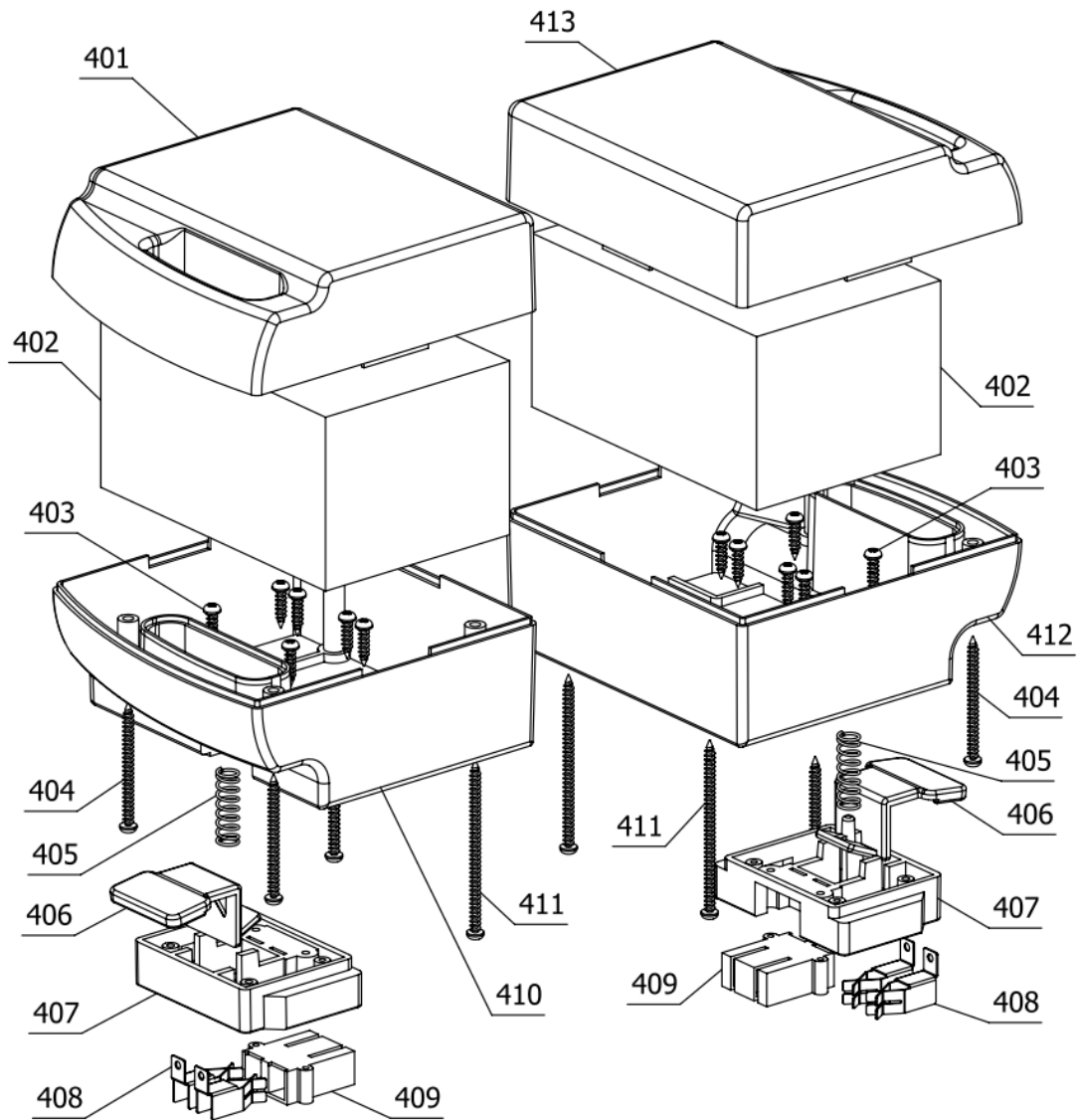


Number	Name	Number	Name
101	Button switch	102	Upper handle case
103	M3 nuts	104	Charging plug
105	M3X20 Pan head screws	106	Lower handle case
107	4X30 Pan head tapping screws	108	M6X20 Cylindrical head screws

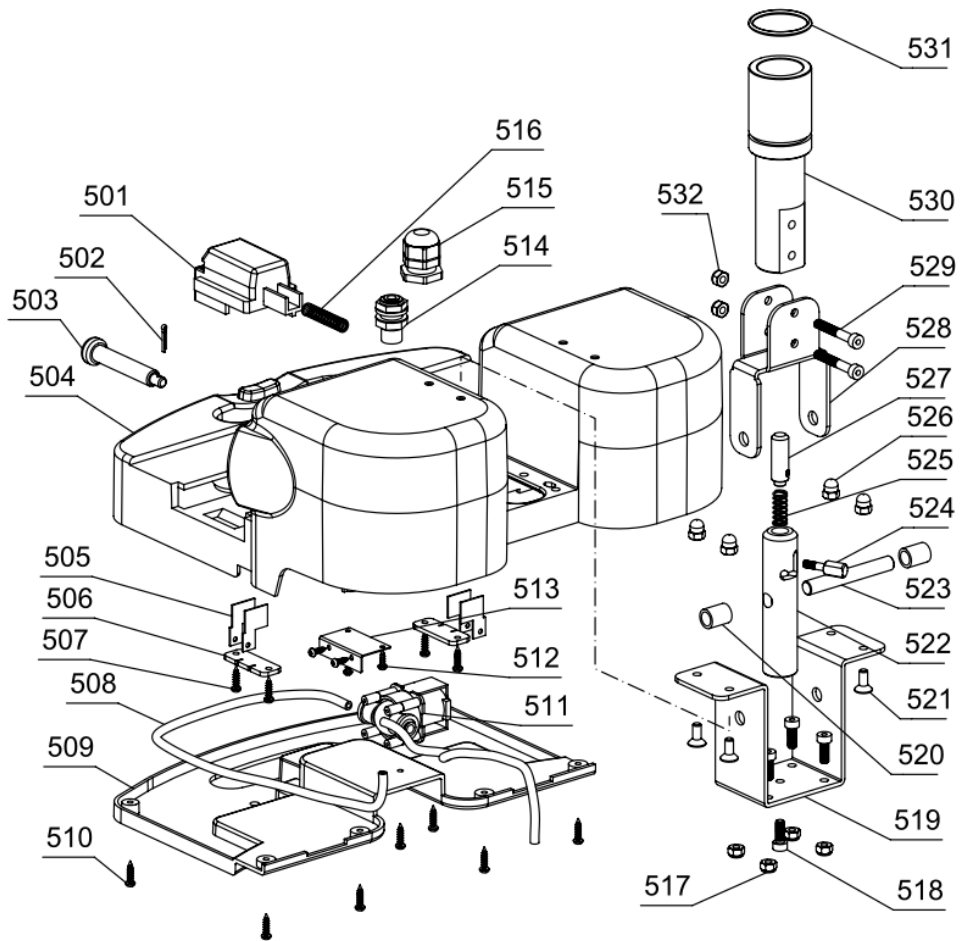
109	Handle connector (back)	110	Handle connector (front)
111	M6X20Cylindrical head screws	112	4X10 Pan head tapping screw
113	Relay	114	4X10 Pan head tapping screws
115	Circuit board	116	Overload protector
117	Power switch	118	Water valve switch

	connector		connector		head screws
213	Water pipe	214	Water suction motor cover	215	4X20 Pan head tapping screws
216	Silencer Sponge Cover	216	Silencer Sponge	218	Motor air guiding shell
219	4X16 pan head tapping screw	220	Water suction motor	221	Water suction motor exhaust hood
222	Motor air guide cover	223	3X12 pan head tapping screw	224	Circuit board cooling box
225	Motor exhaust connector	226	Board heat sink	227	Fan circuit board
228	M3X8 pan head screw	229	Suction pipe lower join	230	Hose clamp
231	Suction pipe	232	Suction pipe joint jacket	233	Joint front plate
234	M6X16 cylindrical head screw	235	Sewage tank suction connector	236	cable

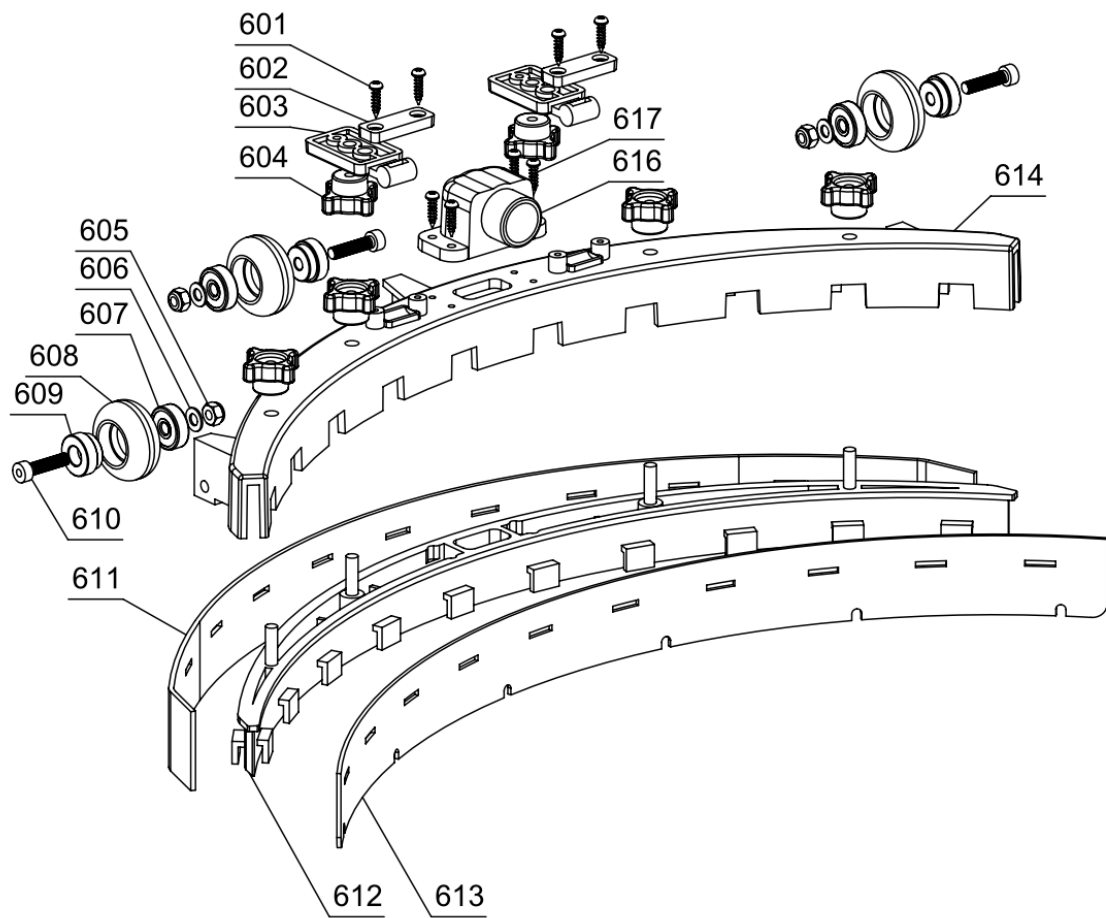
	housing		outer seal		head tapping screws
313	Tank swing buckle screw	314	Tank swing buckle spring	315	Tank swing buckle
316	Suction elbow for sewage tank	317	3X12 countersunk head tapping screw	318	Bottom cover of float ball cover
319	Floating ball cap	320	Sewage tank cover seal strip	321	Sewage tank cover
322	Sewage tank exhaust jacket	323	3X12 countersunk head tapping screw	324	screws
325	O-ring 8X1.8	326	floating ball	327	Sewage tank



Number	Name	Number	Name
401	Right battery case upper cover	402	Batteries
403	3X16 Pan head tapping screws	404	4X50 Pan head tapping screws
405	Springs	406	Battery pull buckles
407	Battery buckles	408	Battery plug copper parts
409	Battery plugs	410	Right battery case lower cover
411	4X70 Pan head tapping screw	412	Left battery case lower cover
413	Left battery case upper cover		



Number	Name	Number	Name
501	Machine fixing buckle	502	2.5X12 cotter pin
503	Machine lock lever	504	Disc brush motor cover
505	Battery inserting pieces	506	Battery insert plates
507	4X16 Pan head tapping screws	508	Water pipe
509	Motor cover bottom cover	510	4X20 Pan head tapping screws
511	The electromagnetic valve	512	3X10 Pan head tapping screw
513	Solenoid valve fittings	514	Water pipe quick connector
515	Cable waterproof connector	516	Spring9*1*40
517	M6 lock nut	518	M6X16 cylindrical head screw
519	Connect the fork holder	520	Knuckle sleeve
521	M6X15 countersunk head screw	522	Handle upright buttonhole sleeve
523	Hand joint shaft	524	Pull the trigger with your hand straight
525	Spring10*0.8*24	526	M6 round nut
527	Handle upright locking core	528	Handle connecting fork
529	M6X40 cylindrical head screw	530	Handle joint fitting
531	40*3 seal ring	532	M6 lock nut



Number	Name	Number	Name
601	4X16 Pan head tapping screws	602	Parabolic squeegee components
603	Positioning components	604	M4X20 Pan head screws
605	M6 lock nuts	606	12X6 Flat pads
607	606 Bearings	608	40MM Parabolic squeegee wheels
609	Bushings	610	M6X25 Cylindrical head screws
611	Parabolic squeegee rear strip	612	Parabolic squeegee inner part
613	Parabolic squeegee front strip	614	Parabolic squeegee case
615	M6 wing nuts	616	Parabolic squeegee connector

			Parts
709	M4X20 Pan head tapping screws	710	12X6 Flat pads
711	Spring pads	712	M6X25 Cylindrical head screws
713	Disc brushes	714	Drive buckle plates
715	5X16 Pan head tapping screw	716	M5X12 Cylindrical head screws
717	Water pipe quick connector		

Series product warranty card

Card Number:

Customer Name:

Contact Number:

Address :

Post Code:

Date of purchase:

Invoice number:

Product Model Number:

Serial No:

Parts to be replaced:

Fault description:

Distributor (official seal)

1. This warranty card must be stamped with the official seal of the distributor.
2. This warranty card is in duplicate, one for customer and one for agent distributor.

★This card and the purchasing invoice are both considered as the protection to fix warranties,so please reserve them carefully.

Series product warranty card

Card Number:

Customer Name:

Contact Number:

Address :

Post Code:

Date of purchase:

Invoice number:

Product Model Number:

Serial No:

Parts to be replaced:

Fault description:

Distributor (official seal)

3. This warranty card must be stamped with the official seal of the distributor.

4. This warranty card is in duplicate, one for customer and one for agent distributor.

★This card and the purchasing invoice are both considered as the protection to fix warranties,so please reserve them carefully.

ARCORA®
www.arcora-group.com
