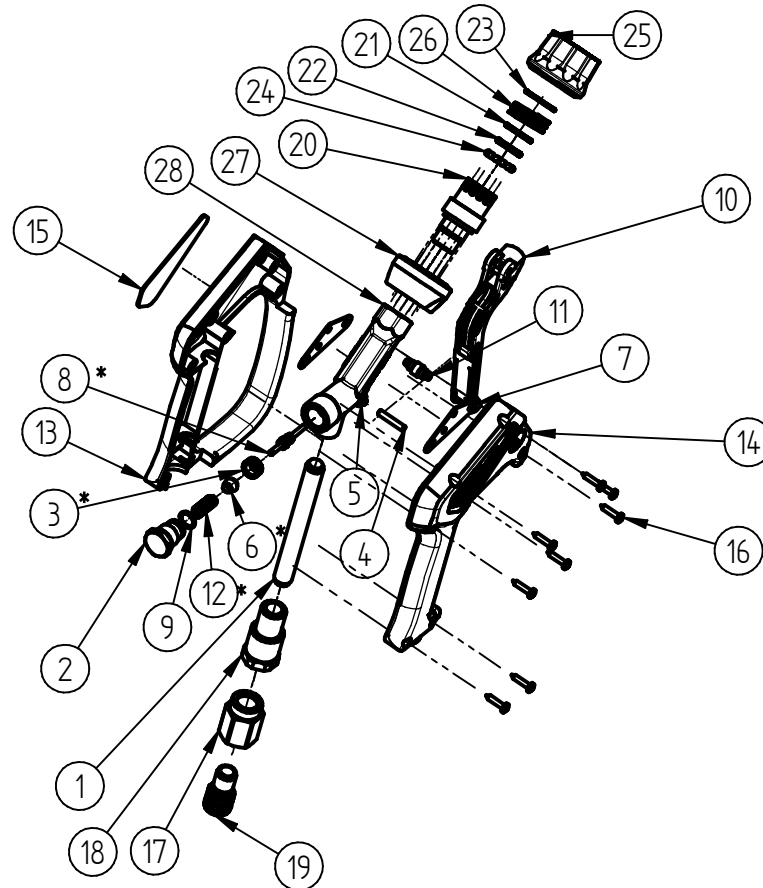


Spare Parts

High Pressure Spray Gun ST-2720

Item-No. 20 2720 550



Pos.	Item-No.	Description	Pos.	Item-No.	Description
1	07 0001 157	Pipe inlet	16	04 0000 051	Screw 3.5x16
2	04 0001 021	Screw plug	17	04 0001 895	Turning part G1/2 FT
3	20 2710 480	Valve seat complete	18	04 0001 855	Adaptor
4	04 0007 081	Axle for trigger	19	20 0340 100	Repair-Kit Swivel
5	04 0007 060	Pin	20	04 0005 477	Connection part G3/8 male
6	02 0000 450	Valve cone	21	05 0000 660	O-ring 18 x 2
7	04 0007 059	Support plate	22	05 0000 670	O-ring 15,1 x 2,7
8	20 2700 400	Piston rod complete	23	06 0000 950	Locking ring
9	05 0001 521	O-ring 10x1,5	24	04 0000 210	Stainless steel ball
10	20 2600 415	Trigger complete blue	25	20 3100 498	Stop nut blue
11	20 2600 400	Pressure roller complete	26	06 0000 960	Spring
12	06 0002 055	Spring DIN 2098-1,2x6,8x25	27	02 0000 244	adaptor for coupling
13	02 0008 632	Plastic housing with handle blue	28	04 0001 040	Housing ST-2710
14	02 0008 633	Plastic housing blue			
15	02 0009 151	Label grey			

Repair-Kits

Pos.	Item-No.	Description	Pos.	Item-No.	Description
*	20 2710 490	Repair Kit ST-2710			