
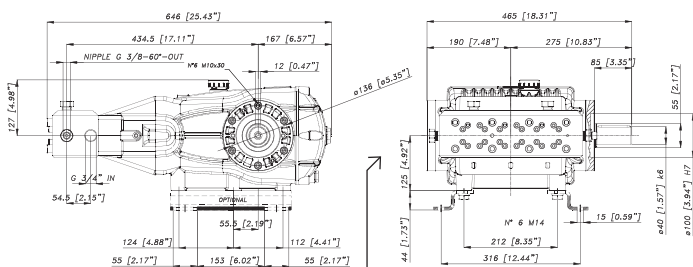


| Caratteristiche - Specifications | | |
|----------------------------------|-------------|---|
| IN | Ø | 3/4" BSP |
| | Press. Min. | 2 bar 29 psi |
| | Press. Max. | 6 bar 87 psi |
| | Temp. Max. | 60° C 140° F |
| OUT | Ø | 3/8 BSP-M-60° |
| SHAFT | Ø | 40 mm |
| OIL | SAE 75W 90 | 4 Lt 1.05 U.S.G. |
| WEIGHT | Kg. / lbs | 91/200.6 |
| SEALS | Type |  |



Applicazioni: Soluzioni complete per la pulizia delle tubazioni p.112
 Applications: Complete solutions for pipe and sewer cleaning p.112

| Codice Code | Modello Model | Press Max Max Pressure | | RPM 700 | | | | RPM 850 | | | | RPM 1000 | | | | Pistone Plunger Dia. mm | Corsa Stroke mm |
|--------------|--------------------|------------------------|-------|---------|-----|------|------|---------|-----|------|------|----------|-----|------|------|-------------------------|-----------------|
| | | bar | psi | L/min | GPM | kW | HP | L/min | GPM | kW | HP | L/min | GPM | kW | HP | | |
| 74.1030.97.3 | CHX 21-1000 | 1000 | 14500 | 15 | 4 | 29,8 | 39,9 | 18 | 4,8 | 35,8 | 48 | 21 | 5,5 | 41,7 | 55,9 | 14 | 50 |
| 74.1037.97.3 | CHX 25-1000 | 1000 | 14500 | 18 | 4,6 | 34,2 | 45,8 | 21 | 5,5 | 41,1 | 55,1 | 25 | 6,6 | 47,9 | 64,2 | 15 | 50 |



**USCITA POTENZA
 OUTLET POWER SOURCE**

- Accoppiamento albero uscita supplementare, per azionamento accessori (es. pompe idrauliche, pompe centrifughe, ecc.)
- Extra shaft coupling to drive accessories (for ex. hydraulic pumps, centrifugal pumps, etc.)
- Accouplement supplémentaire de l'arbre pour l'entraînement d'accessoires (par ex. pompes hydrauliques, pompes centrifuges, etc.)
- Acoplamiento eje a la salida adicional para accionar accesorios (por ejemplo bombas hidráulicas, bombas centrifugas, etc.)

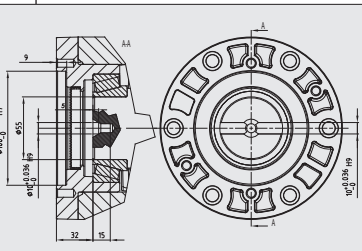


GRAFICO PRESTAZIONI - PERFORMANCE CHART

