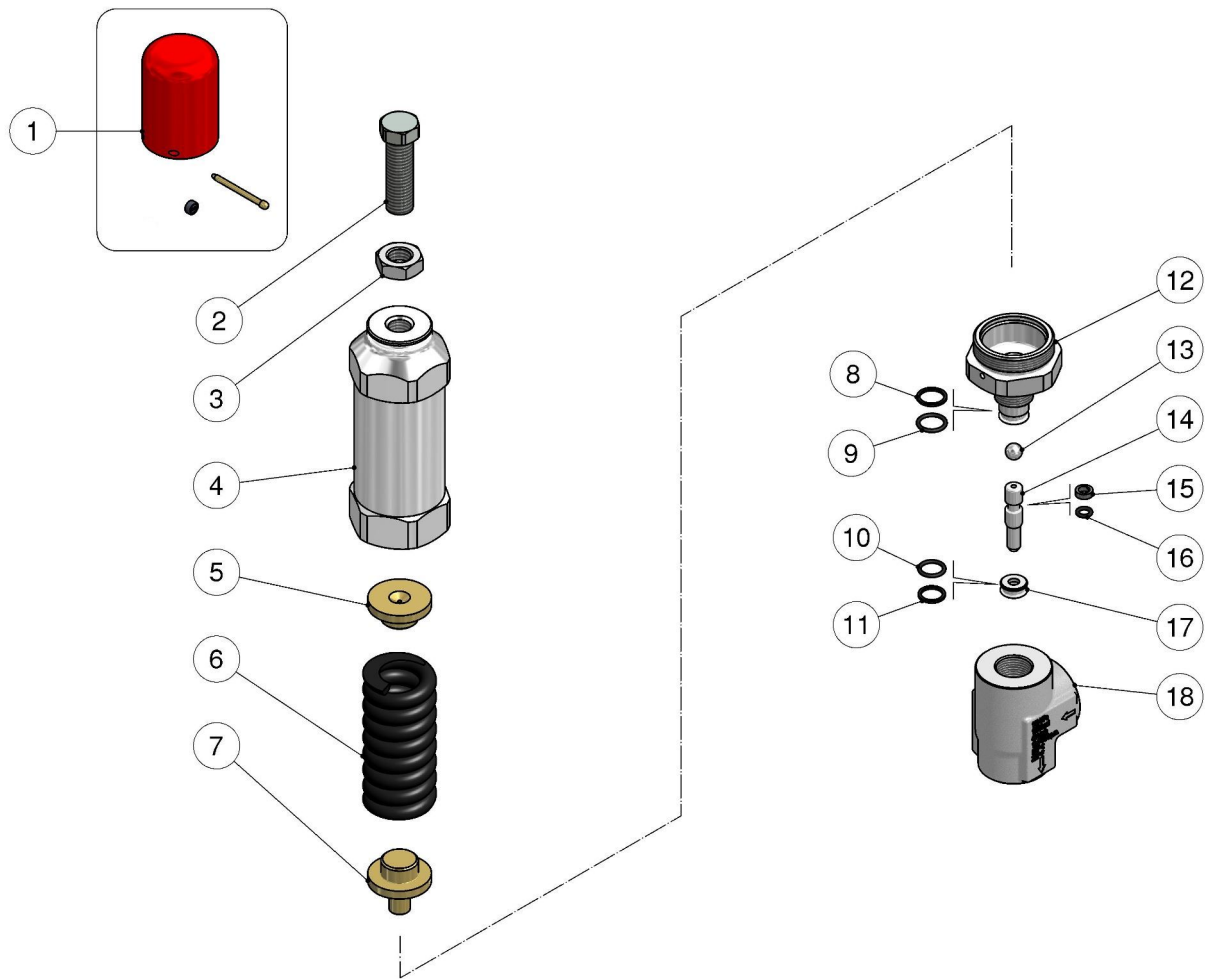


60.0680.00 VS1100 saf.valv.3/8F Bsp to bloc



		K1	K2	K3	K4	
1	60.1412.24 Spare kit knob	1				1
1	60.0598.41R Knob x block. press al-red	1				5
1	60.5114.31R 4 mm brass pin	1				5
1	13.1214.03R 14 mm lead seal **	1				5
2	60.4307.51R Valve regulating screw, M14 sst.	1				2
3	11.4760.00R Hex. nut, M14	1				10
4	60.0685.31R Spring holder, brass	1				1
5	60.0652.31R Spring guide spacer, brass	1				2
6	60.0434.61R Spring, 8,5x38x80 mm black	1				3
7	60.0654.31R Spring rest pin, brass	1				2
8	10.4015.12R Back-up ring, 12,7x15,5x1,2 mm	1	•			10

		K1	K2	K3	K4	
9	10.3060.85R O-ring, 1,78x12,42 mm HNbr 85	1	•			10
10	10.3059.85R O-ring, 1,78x 11,11 mm HNbr 85	1	•			10
11	10.4012.14R Back-up ring, 11,2x143x1,2 mm	1	•			10
12	60.0684.51R Piston holder, Sst.	1				1
13	14.7443.10R Ball, 11/32" Sst.	1				10
14	60.0682.51R Piston, 10 mm Sst.	1	•			3
15	10.4006.09R Back-up ring, 6 x 9 x 3 mm	1	•			10
16	10.3049.85R O-ring, 1,78x 5,28 mm HNbr 85	1	•			10
17	60.0683.51R Seat, 5,8x13,9x6 mm Sst.	1	•			3
18	60.0681.55R Housing -VS1100 3/8 Bsp FF aisi303	1				2

**

		K1	K2	K3	K4	
K1	60.0688.24 Spares kit -Vs 1100, 8x1pcs.	1				1